

BOOST YOUR EARNINGS
WITH ADVENTUS.IO!

Applicable Intakes

May 2025 – Sep 2025

Exclusive Enrollment Bonus For Recruiters
Kerala, Karnataka & Tamil Nadu*

Enrolment Slab	Standard Bonus:	Priority Group Institution Bonus
6	Earn USD 500 as a one-time lump sum	Additional USD 150 per Priority Group Institution Enrolment
7 to 19	Earn up to USD 1710 one-time Lump Sum Bonus	Additional USD 200 per Priority Group Institution Enrolment
20 to 49	Earn up to USD 5000 one-time Lump Sum Bonus	Additional USD 250 per Priority Group Institution Enrolment

Additional University of Suffolk Enrollment Bonus: £250 per enrolled student. This bonus is applicable exclusively for the September 2025 intake. Example: Standard Bonus + Priority Group Bonus + £250

Standard Bonus Calculation:

- Slab 1:** Earn USD 500 for achieving 6 successful enrollments.

Slab 2: Earn USD 90 per enrolment for 7 to 19 enrolments. Eligible from your 1st enrolment.

Slab 3: Earn USD 100 per enrolment for 20 to 49 enrolments, cumulating a total bonus of USD 5000 on your 49th enrolment. Eligible from your 1st enrolment.

Priority Group Institution Bonus

- In addition to the Standard Bonus, you can earn an additional bonus for the enrolments in designated Priority group Institutes:

Slab 1: USD 150 per successful enrollment in a Priority group Institute.

Slab 2: USD 200 per successful enrollment Priority group Institute for enrollments 7 to 19. Eligible from your 1st Priority Group Institution enrolment.

Slab 3: USD 250 per successful enrollment Priority group Institute for enrollments 20 to 49. Eligible from your 1st Priority Group Institution enrolment.

Disclaimer:

- Adventus will not be responsible for any delays for matters outside of its control, including any delays:

 - In lodging the Student application where the application is incomplete or inaccurate.
 - In processing times by the Institution partners.
 - In you providing the required information to Adventus time and time again as requested.
 - If the student does not commence the course within the stipulated time as mentioned by the institution.

Definitions:

Terms not defined in these promotion terms will have the meaning provided in the Adventus Recruiter Terms & Conditions: Recruiter Terms & Conditions

For more information, please reach out to our: Regional Manager, Prasanth, at: +91 9289376672

Scan here
to login in
to our
platform.





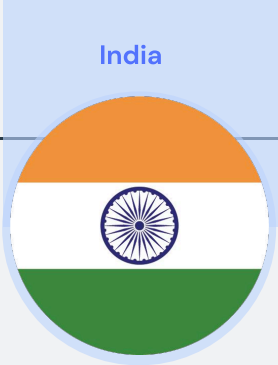
Priority Group Universities

University	Destination	Commission %	Net/Gross	Remarks
London Metropolitan University	United Kingdom	20%	Net	
University of Suffolk	United Kingdom	15%	Net	
Glasgow Caledonian University	United Kingdom	1-5 = 15% 6-10 = 18% 11+ = 20%	Net	Percentage paid as per slabs. Ex - 20% will be paid from 11th student onwards
University of West of England Bristol (UWE Bristol)	United Kingdom	15%	Net	
Leeds Beckett University	United Kingdom	15%	Gross	Punjab, Harayana & Gujarat are RESTRICTED
University of Aberdeen	Scotland	12,50%	Net	
Texas State University	United States of America	10%	Net	Entire Duration of the student's study Ex - 3 year course will be paid 10% for each year
Northern Arizona University	Scotland	20%	Net	
University of Canterbury	New Zealand	12,50%	Net	



Scan here to login to our platform.

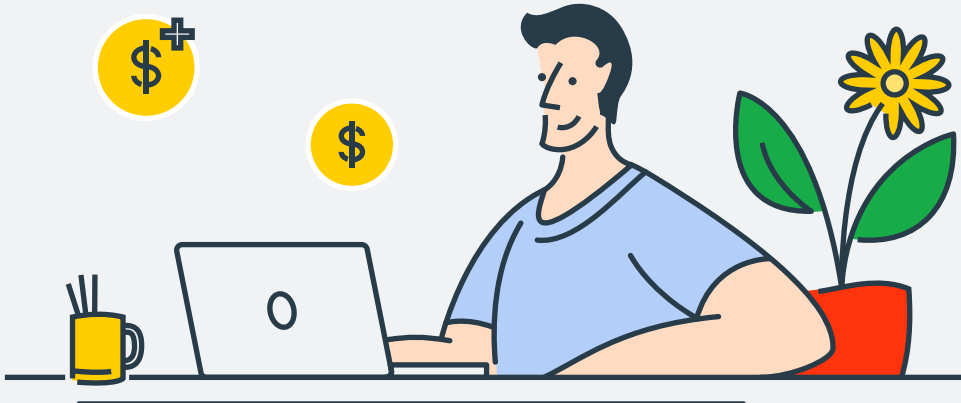




Maximize Your Earnings with Adventus' Premium University Partners Offering 100% Commissions

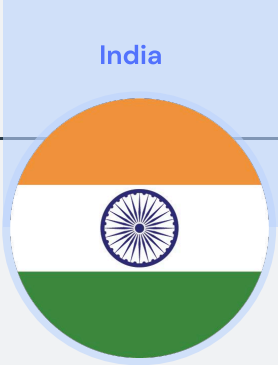


Scan here to login to our platform.



University	Destination	Commission %	Net/Gross	Intake
Ulster University via QA Higher Education	United Kingdom	15%	NET	May,Sep
University for the Creative Arts (UCA)	United Kingdom	15%	NET	May, Sep
University of Greenwich	United Kingdom	18%	GROSS	April, Sep
Canterbury Christ Church University via GUS <small>Restriction : Punjab, Haryana, Hyderabad and Uttar Pradesh</small>	United Kingdom	20%	NET	Sep
London South Bank University	United Kingdom	15%	NET	Sep
Northumbria University London Campus via QA Higher Education	United Kingdom	15%	NET	May, Sep
Northumbria University via QA Higher Education	United Kingdom	15%	NET	May, Sep
Robert Gordon University	United Kingdom	15%	NET	Sep
University of Chester	United Kingdom	15%	GROSS	May, Sep
University of South Wales	United Kingdom	15%	NET	Sep
Northumbria University	United Kingdom	12%	NET	Sep
Hertfordshire International College via Navitas	United Kingdom	13%	NET	May/Sep
Brunel University London Pathway College via Navitas	United Kingdom	13%	NET	May/Sep
Birmingham City University International College via Navitas	United Kingdom	13%	NET	May/Sep
Northern Arizona University	United States of America	20%	NET	Sep
Queen's College, City University of New York GSSP via Navitas	United States of America	15%	NET	Aug

*The commission calculation is dependent upon number of credits enrolled as per the chosen program



University	Destination	Commission %	Net/Gross	Intake
Curtin College via Navitas	Australia	13%	NET	Jun/Oct
Charles Sturt University Sydney/ Melbourne via Navitas	Australia	15%	NET	Mar/Jul/Nov
Western Sydney University International College via Navitas	Australia	15%	NET	Mar/Jul/Oct
Fraser International College (Simon Fraser University) via Navitas	Canada	13%	NET	May/Sep
Keele University International College via Navitas	United Kingdom	13%	NET	May/Sep
International College Portsmouth (ICP) via Navitas	United Kingdom	13%	NET	Jun/Oct
Lancaster University Leipzig via Navitas	Germany	13%	NET	Oct
University of Wollongong	Australia	10%	NET	March, July
Federation University	Australia	15%	GROSS	March, July, Nov
TAFE NSW	Australia	15%	NET	March, July
James Cook University Brisbane	Australia	15%	NET	March, July, Nov
South Australia Institute of Business and Technology via Navitas	Australia	13%	NET	Jun/Oct
La Trobe University – Sydney Campus via Navitas	Australia	13%	NET	Mar/Jul/Nov
Deakin College via Navitas	Australia	13%	NET	Mar/June/Oct
Western Sydney University Sydney City Campus via Navitas	Australia	15%	NET	Mar/Jul/Nov
University of Lethbridge International College Calgary via Navitas	Canada	13%	NET	May/Sep
Toronto Metropolitan University International College via Navitas	Canada	13%	NET	Sep
International College of Manitoba via Navitas	Canada	13%	NET	May/Sep
Wilfrid Laurier International College via Navitas	Canada	13%	NET	Sep

**University of Aberdeen – only for undergraduate.*

**Leads Beckett University – only direct program are eligible .*

**University of the west of England Bristol – not applicable for PhD, MRes, MSc Robotics, and any course that are part-time or not open to visa holders.*

**The commission calculation is dependent upon number of credits enrolled as per the chosen program*